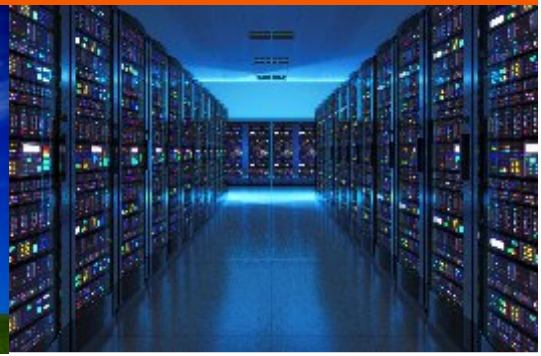




OMNIPOWER

THE POWER OF CHOICE



12V **OPR** Deep Cycle Rechargeable AGM / GEL Hybrid VRLA **Solar Battery**

- Solar / Wind Power systems
- Alternative energy storage systems
- UPS / Wheelchair / electric vehicles
- Boats / marine / navigational aids
- High-cycle applications



OMNIPOWER
THE POWER OF CHOICE

Deep Cycle Rechargeable AGM / GEL Hybrid VRLA Solar Battery
Specifically designed for PV Solar / Wind Storage / UPS / Standby

MODEL: OPR240-12 (12V240AH)

Charge Voltage (@ 25°C):
Cycle: 14.4-14.7 V
Standby: 13.6-13.8 V
Initial Charge Currents:
Minimum: 30 A
Recommended: 40 A
Maximum: 50 A

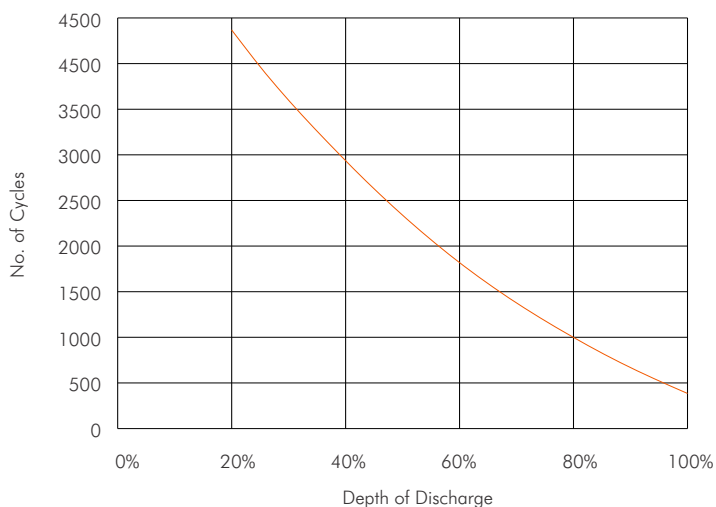
Caution:
Do not incinerate.
Do not short the battery terminals.
Do not charge in an airtight enclosure.



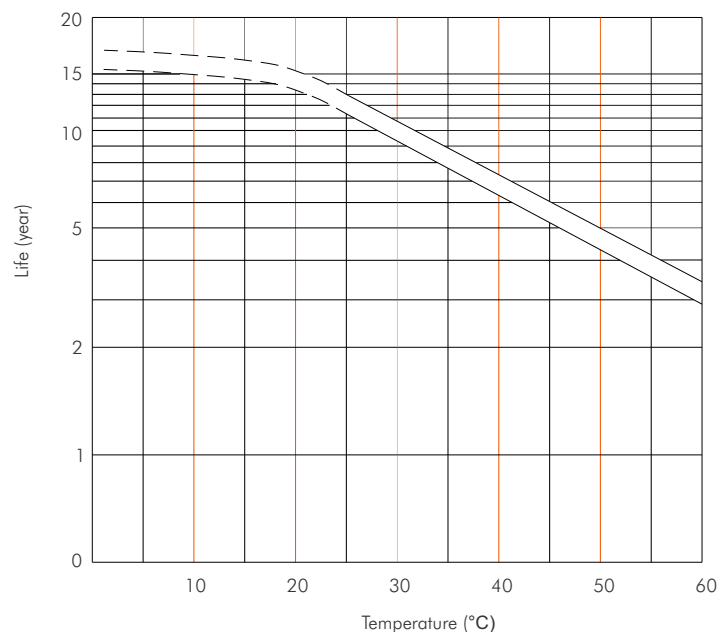
SPECIFICALLY DESIGNED FOR: PV SOLAR / WIND STORAGE / UPS / STANDBY

12V OPR Deep Cycle Rechargeable AGM / GEL Hybrid VRLA Solar Battery

Cycle Service Life



Float Service Life



Based on 20 years' experience in research and development, the **OmniPower OPR** range of batteries is specifically designed for Solar / Wind power applications. These batteries use gel technologies together with deep cycle technologies and use special components in the lead alloy as well as additional electrolyte, resulting in a much longer cycle life.

FEATURES:

- Reduction of cell failure due to premature dry out
- Fully-sealed - can be installed upright or on their side without risk of leaks.
- Extends cycle service life by reducing plate corrosion
- Gelled Thixotropic electrolyte
- Meets the following standards: European Conformity, ISO9001, ISO14001, ISO18001
- 12 year design life for 12V batteries
- Convenient carrying handles
- 8mm Screw Terminals

Model	OPR60-12	OPR120-12	OPR180-12	OPR240-12
Nominal Voltage	12V			
Rated Capacity C/100	60Ah	120Ah	180Ah	240Ah
Rated Capacity C/10	50Ah	100Ah	150Ah	200Ah
Charge Voltage: Cycle	14.4 ~ 14.7V			
Charge Voltage: Standby	13.6 ~ 13.8V			
Initial Charge Currents				
Minimum	8A	15A	23A	30A
Recommended	10A	20A	30A	40A
Maximum	12A	25A	37A	50A
Dimensions L x W x H (mm)	229 x 138 x 211	330 x 174 x 216	483 x 170 x 240	522 x 239 x 219
Approx. Weight (kg)	17.5	30.8	45	62.5
Design Life	12 Years			